

LAKE AND POND REMEDIATION, INC.

&

CHARLES AQUACULTURE, LLC

15350 N US Highway 301 Citra, FL 32113

LAPR Office: 352-595-8863

Fish farm Office: 352-595-1700

Service Report

Date: September 25, 2023

Biologist: Doug Charles

Client: Palencia, Marsh Creek CDD

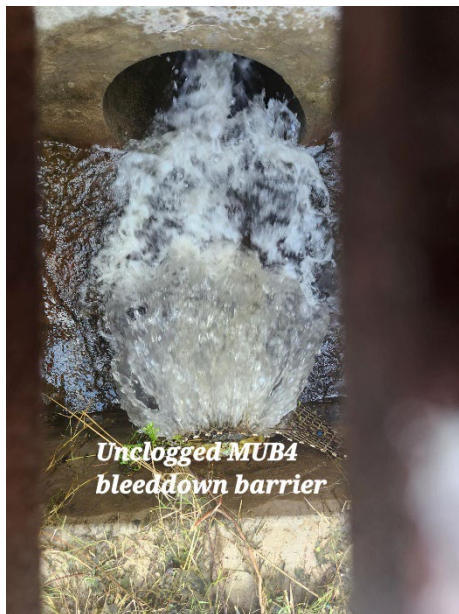
Ratings: 1 – 10 (Best is 10)

Waterways: 32 ponds

Herbicides used: None

Lake MUB4: Rated: 8

- Water level is high due to new bleeddown pipe fish barrier being partially clogged.
- Minor to moderate pulled up grasses (by grass carp) along shoreline.



Treatment: I cleared the clog at the bleeddown pipe, and the water was then discharging freely. Hand raked the floating grasses from the north end.

Recommendations: I will keep an eye on the water level.

Lake CSP: Rated: 9

- Water level is high from new bleeddown orifice fish barrier being clogged.



Treatment: I went down into the control structure by ladder and unclogged the new fish barrier and the water was then discharging freely.

Recommendations: I will keep an eye on the water level.

Lake 2: Rated: 8

- Water level is normal.
- Spotty bacopa around the edge.
- Grasses have filled in where they previously died from high water level.



Treatment: None needed.

Recommendations: I plan to stock more grass carp to better control the weeds.

LAKE AND POND REMEDIATION, INC.

&

CHARLES AQUACULTURE, LLC

15350 N US Highway 301 Citra, FL 32113

LAPR Office: 352-595-8863

Fish farm Office: 352-595-1700

Service Report

Lake 1: Rated: 9

- Minimal shoreline grasses.
- Water level is normal.
- Grasses have filled back in where they died from high water level.



Treatment: None needed.

Recommendations: None.